



## CONCASOR CU FĂLCI BB 400

Ergonomic handling and large feed size

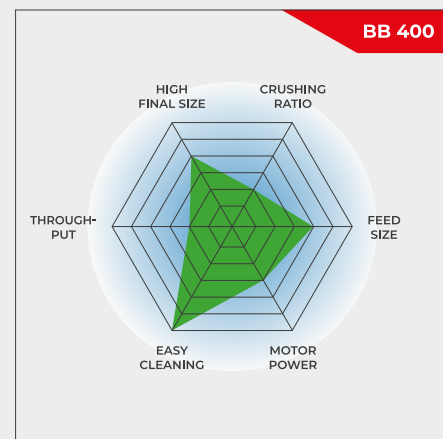
**The Jaw Crusher BB 400 is specifically designed for accepting large feed sizes up to 220 x 90 mm. The gap width can be set stepless from 0-30 mm. Depending on the sample material, particle sizes down to 2 mm can be obtained, resulting in a crushing ratio of 50. A throughput of up to 400 kg/h is possible with the BB 400.**

The RETSCH jaw crusher series is available in 8 different sizes. Throughput and final fineness depend on the crusher type, selected gap width and breaking properties of the sample material.

Robust design, simple handling and cleaning are the features of the RETSCH jaw crusher models. Small amounts of sample are processed batchwise; for larger amounts the crushers can be operated continuously.

## ROBUST & VERSATILE

- | Front door facilitates cleaning of crushing chamber
- | Infinite/continuous gap width setting
- | Wide range of materials for contamination free grinding
- | Collecting receptacle with outlet for continuous operation
- | Connector for dust extraction
- | Scale indicates jaw wear
- | Selection of hoppers for specific applications



Ergonomic handling and large feed size

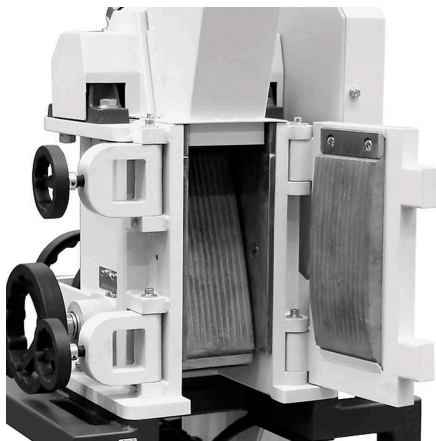
CONCASOR CU FĂLCI BB 400

## SUPERIORITATE ÎN DETALII

For sample amounts up to 10 l, the BB 400 is used batchwise; for larger volumes it can be operated continuously. Thanks to the modular concept of the housing and frame, this jaw crusher is suitable for a wide range of applications.

A front door gives direct access to the crushing chamber at a perfect height for ergonomic and easy cleaning. The feed hopper with splash-back protection can be removed quickly and easily. The BB 400 has a connection for dust extraction and is protected against mechanical overload. A scale indicates the wear of the breaking jaws, informing the user when it is time for an exchange.

The crushing chamber is available in 5 different materials to ensure neutral-to-analysis sample preparation. The technical and safety features make this jaw crusher ideally suited for sample preparation in laboratories and for small scale production.



Front door allows for easy cleaning



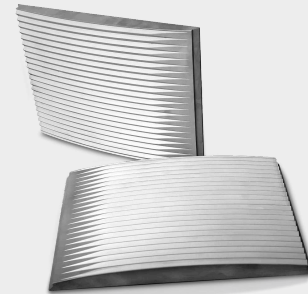
Connection for dust extraction

## ACCESSORIES FOR THE JAW CRUSHER BB 400

### BREAKING JAWS

Fălcile și placuțele de uzură sunt disponibile în 5 materiale diferite și pot fi selectate în funcție de caracteristicile probei și de analizele efectuate ulterior măcinării:

- | oțel mangan
- | oțel inoxidabil
- | carbura de wolfram
- | steel for heavy-metal free grinding
- | NiHard4 oțel



### BUNCĂRE

Three hopper types are available for the BB 400 jaw crusher.

The standard hopper can be optionally equipped with a special infeed hopper. This additional hopper can be placed on a table for loading up to 10 l of sample material. By attaching it to the standard hopper with a connection rod, the sample is fed into the BB 400 with the help of a manual pusher.

A special hopper is available for quick and easy feeding of drill cores or large amounts of bulk material. The cover can be closed to serve as splash back protection.

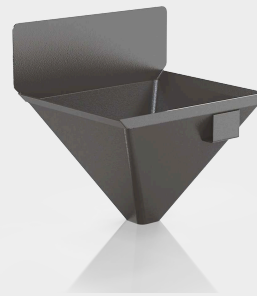


## COLLECTING VESSELS

In addition to the standard receptacle which accepts sample amounts up to 10 l, two options are available.

For continuous operation the collection funnel with outlet is the ideal choice.

The large volume receptacle accepts up to 26 liter of sample and comes with a flexible connection flange and a carrier on wheels. This version is the best choice for dust-free operation.



## CONCASOR CU FĂLCI BB 400

### PROBE TIPICE

Concasoarele puternice RETSCH sunt ideale pentru măcinarea primară a materialelor de construcții, a minereurilor, granitului, ceramicii de oxid, cuarțului, zgurii, siliciului, cărbunelui, aliajelor de tungsten, clincherului de ciment, etc.



*clinker ciment*



*materiale ceramice*



*catalizatori*



*drill core*

Pentru a găsi cea mai bună soluție de măcinare accesați baza noastră de date

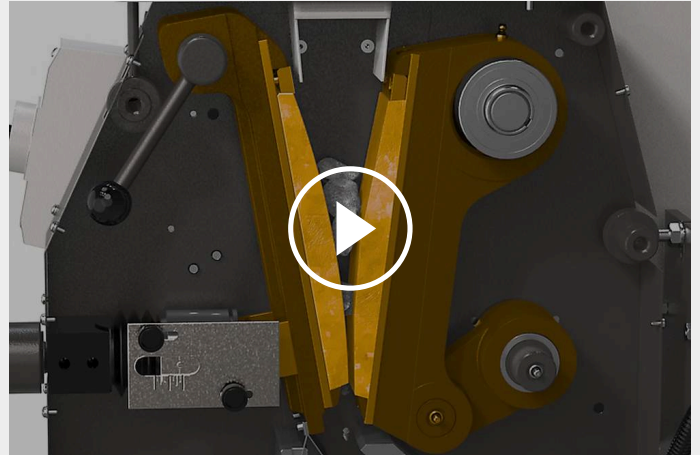
CONCASOR CU FĂLCI BB 400

## PRINCIPIU DE FUNCȚIONARE

Concasorul cu fălci BB 400 este un concasor robust și puternic, cu alimentare forțată. Materialul alimentat trece prin buncărul de alimentare fără recul și intră în camera de zdrobire.

Reducerea dimensiunilor are loc în zona trapezoidală între falca fixă de cea acționată printr-un excentric. Mișcarea eliptică zdrobește proba care apoi cade sub forța gravitației.

Îndată ce proba este mai mică decât dimensiunea spațiului de evacuare, cade într-un vas colector detașabil. Dimensiune spațiului de evacuare poate fi ajustată continuu, ceea ce conduce la o reducere optimă a probei.



[Click pentru video](#)

CONCASOR CU FĂLCI BB 400

## PRINCIPIU DE FUNCȚIONARE

<b>Aplicabilitate</b>	concasare grosieră
<b>Domenii in care se utilizeaza</b>	chimie/plastic, geologie/metalurgie, inginerie/electronică, materiale construcții, mediu/reciclare, sticlă/ceramică
<b>Material probă</b>	duritate medie/mare, casant
<b>Principiul de reducere a dimensiunii</b>	prin aplicarea unei presiuni asupra probei
<b>Dimens. max. probă*</b>	< 220 x 90 mm
<b>Finețe finală*</b>	< 2 mm
<b>Puterea produsă*</b>	400 kg/h
<b>Material de construcție a elementelor de macinare</b>	oțel mangan, carbura de wolfram, steel for heavy-metal free grinding, NiHard4
<b>Dimensiuni fălci</b>	220 x 90 mm
<b>Setarea distantei dintre fălci</b>	0-30 mm
<b>Afișajul distantei dintre fălci</b>	scală
<b>Compensare uzura cu punct 0</b>	da
<b>Wearing rate display</b>	yes, up to minus 10 mm
<b>Buncăr de alimentare</b>	da
<b>Etans la praf</b>	da
<b>Lubrifiere</b>	nu
<b>Varianta constructiva pentru procese in linie</b>	opțional
<b>Capacitate colector</b>	10 l
<b>Cadru de bază</b>	vario frame (adjustable for continuous crushing)
<b>Antrenare</b>	motor electric
<b>Putere motor</b>	5.5 kW
<b>Alimentare electrica</b>	230 V, 50 Hz
<b>Conectare sursă de alimentare</b>	trifazic
<b>Grad de protecție</b>	IP 55
<b>W x H x D (închis)</b>	695 x 1399 x 719 mm
<b>Masa netă:</b>	~ 400 kg
<b>Standard</b>	CE




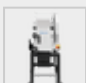
\* în funcție de materialul probei și configurația/setările instrumentului

[www.retsch.ro/bb400](http://www.retsch.ro/bb400)

## INFORMAȚII DESPRE COMANDĂ

### JAW CRUSHER BB 400

**Jaw Crusher BB 400 complete with breaking jaws, wearing plates, door, feed hopper, 10 l collecting receptacle and base frame**

				<b>fălci / plăcuțe de uzură</b>
21.002.0001		BB 400	3~ 400 V, 50 Hz	manganese steel / hardened steel
21.002.0012		BB 400	3~ 400 V, 50 Hz	NiHard 4 / hardened steel
21.002.0002		BB 400	3~ 400 V, 50 Hz	tungsten carbide / hardened steel
21.002.0004		BB 400	3~ 400 V, 50 Hz	heavy metal free steel / heavy metal free steel

**la cerere, sunt disponibile alte versiuni electrice, la același preț**

### CYCLONE FOR BB 400

CYCLONE SET WITH HOLDER, CONNECTING ELEMENT, LID WITH CONNECTOR FOR VACUUM CLEANER AND SAMPLE OUTLET  
(PLEASE ORDER CASSETTE WITH OUTLET SEPERATELY)

22.935.0039	Cyclone set with collecting receptacle 30 l
03.183.0142	Cassette with outlet for use with cyclone
02.605.0420	Adjustable steel connection tubing (316L) for cyclone set
05.707.0208	FDA certified hose, 1.5 m
22.748.0017	Industrial vacuum cleaner Attix, 230 V, 50/60 Hz

### ACCESSORIES JAW CRUSHER BB 400

#### BREAKING JAWS BB 400

23.048.0029	Fălci, oțel mangan, 1 pereche
23.048.0045	Fălci, NiHard 4, 1 pereche
23.048.0030	Fălci, tungsten carbide, 1 pereche
23.048.0031	Fălci, heavy metal free steel, 1 pereche

**other materials available on request**

WEARING PLATES BB 400

23.711.0021	Plăcuțe de uzură, hardened steel, 1 pereche
23.711.0020	Plăcuțe de uzură, tungsten carbide, 1 pereche
23.711.0019	Plăcuțe de uzură, heavy metal free steel, 1 pereche

**other materials available on request**

FURTHER ACCESSORIES BB 400

23.003.0016	Collecting receptacle, standard steel, powder coated, 5 litres
02.054.0058	Collecting receptacle, standard steel, powder coated, 10 litres
23.003.0024	Collecting receptacle, oțel inoxidabil, 26 litres complete with connection flange and carrier with wheels
02.785.0226	Collecting funnel with outlet for continuous use, powder coated
23.785.0018	Hopper for drill cores
23.003.0019	Infeed hopper, oțel inoxidabil, 10 litres incl. connection rod and manual pusher
03.025.0137	Adapter for vacuum cleaner
01.657.0031	Raised access step