

SCHIJVENTRILMOLEN RS 300

Analytical fineness for large sample volumes

No grinder can beat the speed of a Vibratory Disc Mill when it comes to preparing samples for spectral analyses. RETSCH's Vibratory Disc Mill RS 300 is suitable for rapid, loss-free and reproducible grinding of medium-hard, brittle and fibrous materials.

Thanks to the robust universal drive shaft, which sets the grinding jar into a 3D motion, the RS 300 accepts grinding set weights of up to 30 kg. The closed grinding system guarantees complete processing of the sample.

Grinding sets are available in a variety of sizes and materials, allowing for easy adaptation to application requirements.



[Klik om video te bekijken](#)

Product Video

REPRODUCIBLE & SAFE

- | Reproducible results and homogeneous samples thanks to universal drive shaft
(3D vibration of grinding sets)
- | Auto-reverse function (left/right rotation)
- | Programmable interval function (start/ stop automatic)
- | Grinding jar volumes from 100 ml up to 2,000 ml
- | Pneumatic grinding-jar clamping (with air-pressure) for convenient and safe handling
- | Additional safety feature: Mill only starts when the pneumatic pressure is correct
- | Optional AutoLifter for ergonomic lifting of heavy grinding sets



SCHIJVENTRILMOLEN RS 300

ERGONOMIC HANDLING AND EASY OPERATION

Operation and handling of the RS 300 and its grinding sets is convenient and ergonomic. The **AutoLifter** is an optional accessory which greatly facilitates ergonomic lowering and lifting of the high-capacity grinding sets. It is simply placed around the grinding set and activated by pushing a button.

The **pneumatic clamping device** allows for convenient and safe fastening of the jar. The mill only starts if the pneumatic pressure is correct and the device lifts automatically when the grinding process stops.

The grinding parameters are entered using a keypad. While the programmable interval function helps to improve grinding results, the autoreverse function reduces caking effects inside the grinding jar.



Thanks to a variety of sizes and materials of the grinding sets, the RS 300 is suitable for a wide range of applications. The mill accommodates batch sizes from 35 ml to 2000 ml and material feed sizes up to 20 mm.

A grinding set for the vibratory disc mill consists of a grinding jar with cover and a grinding disc. The 400 ml grinding set also contains a grinding ring, the 300 ml grinding sets has two additional grinding rings.

The grinding sets are characterized by the following features:

- | Safe, non-slip attachment with anti-twist lock on cover and base
- | Gap between dish and cover edge for easy opening
- | Optimum sealing with O-ring (ideal for wet grinding)
- | Clear grinding set identification (article number, material and volume)
- | The disc of the 800 ml, 1000 ml and 2000 ml grinding sets has an opening which supports perfect mixing of large sample quantities



SCHIJVENTRILMOLEN RS 300

TYPISCHE MONSTERS

RETSCH's Vibratory Disc Mills rapidly pulverize materials such as cement, cement clinker, ceramics, coal, coke, concrete, corundum, glass, metal oxides, minerals, ores, silicate, slag, soil, etc.

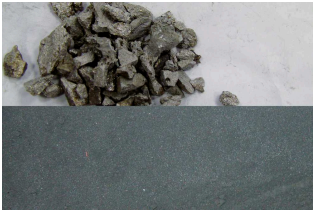


slakken

electronisch schroot

iridium

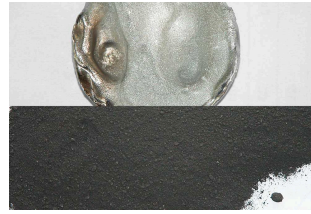
dolomite



slakken



electronisch schroot



iridium



dolomite

Bezoek onze toepassingsdatabase om de beste oplossing voor uw monstervoorbereiding of analyse te vinden.

SCHIJVENTRILMOLEN RS 300

PRINCIPE

De Schijventrilmolen maalt door impact en wrijving. De maalset wordt vast aangedrukt tegen de trilplaat met een snelspansysteem. De trilplaat wordt dan onderworpen aan 3-D vibraties.

De centrifugaal krachten die op de maalringen inwerken, resulteren in extreme druk-, impact- en wrijvingskrachten, die op het monster inwerken. De vibraties worden bekomen door middel van een 3-phase frequentie gecontroleerde 2.2 kW motor.

SCHIJVENTRILMOLEN RS 300

TECHNISCHE GEGEVENS

Toepassingen	malen, mengen, tritureren
Toepassingsdomein	Milieu / Recycling, bouwmaterialen, geologie / metallurgie, glas / keramiek
Toevoermateriaal	medium-hard, hard, breekbaar, vezelig
Maalprincipe	druk, wrijving
Korrelgrootte materiaal*	< 20 mm
Eindfijnheid*	< 20 µm
Batchgrootte / Toevoerhoeveelheid*	35 - 2,000 ml
Snelheid bij 50 Hz (60 Hz)	912 min ⁻¹
Materiaal van maalwerktuigen	chromstaal (gehard staal), wolframcarbide, staal 1.1740 (voor het malen zonder zware metalen)
Maalbeker maten	50 ml / 100 ml / 300 ml / 400 ml / 800 ml / 1,000 ml / 2,000 ml
Instelling maalduur	digital, 00:00 to 59:59
Aandrijving	3-fasenmotor
Aandrijfvermogen	2.2 kW
Gegevens electriciteit	verschillende spanningen
Aansluiting electriciteit	3-fasen
Beschermingsklasse	IP 40
B x H x D gesloten	1150 x 1400 x 810 mm
Netto gewicht	~ 415 kg (zonder maalset)
Standaarden	CE

*afhankelijk van toegevoerd materiaal en configuratie/instellingen van toestel

www.retschnl/rs300

BESTELGEGEVENS

VIBRATORY DISC MILL RS 300

**Vibratory Disc Mill RS 300 for grinding sets 100 ml - 2000 ml
(please order grinding sets separately)**

21.101.0001	RS 300	3/N~ 400 V, 50 Hz, without AutoLifter
21.101.0005	RS 300	3/N~ 220 V, 60 Hz, without AutoLifter

andere spanningsvarianten aan dezelfde prijs op aanvraag

ACCESSORIES / SPARE PARTS RS 300

23.225.0003	AutoLifter for ergonomical outlifting of grinding sets 800, 1000 and 2000 ml
03.143.0071	Platform Insert
03.225.0093	Disc hook
23.701.0007	Air compressor 200/240 V, 50 Hz
03.381.0010	Airbag clamp
23.181.0001	Spring (set of 6 pieces)
23.043.0001	Spring spigot bush (set of 12 pieces)

2000 ML GRINDING SETS

**Complete set, incl. grinding jar, lid with gasket and disc
(no spacer ring needed)**

23.462.0002	Grinding set complete, chrome steel
23.462.0020	Grinding set complete, standard steel
23.462.0003	Grinding set complete, stainless steel 1.4401 polished

ACCESSORIES / SPARE PARTS

03.462.0378	Grinding jar, chrome steel
03.470.0041	Disc, chrome steel
03.107.0589	Deksel, chrome steel
03.107.0592	Aeration lid, chrome steel

03.462.0376	Grinding jar, standard steel
03.470.0042	Disc, standard steel
03.107.0588	Deksel, standard steel
03.111.0364	Gasket for lid

1000 ML GRINDING SETS

**Complete set, incl. grinding jar, lid with gasket and disc
(please order spacer ring separately)**

23.462.0016	Grinding set complete, chrome steel
23.462.0014	Grinding set complete, standard steel

ACCESSORIES / SPARE PARTS

23.025.0109	Spacer ring for chrome steel, standard steel and silicon nitride grinding set
03.462.0377	Grinding jar, chrome steel
03.470.0039	Disc, chrome steel
03.107.0587	Deksel, chrome steel
03.462.0372	Grinding jar, standard steel
03.470.0040	Disc, standard steel
03.107.0586	Deksel, standard steel
03.111.0363	Gasket for lid

800 ML GRINDING SETS

**Complete set, incl. grinding jar, lid with gasket and disc
(please order spacer ring separately)**

23.462.0024	Grinding set complete, chrome steel
23.462.0018	Grinding set complete, standard steel

ACCESSORIES / SPARE PARTS

23.025.0109	Spacer ring for chrome steel and standard steel grinding set
03.462.0379	Grinding jar, chrome steel
03.470.0037	Disc, chrome steel

03.107.0585	Deksel, chrome steel
03.462.0371	Grinding jar, standard steel
03.470.0038	Disc, standard steel
03.107.0584	Deksel, standard steel
03.111.0360	Gasket for lid

400 ML GRINDING SETS

**Complete set, incl. grinding jar, lid with gasket and disc
(please order spacer ring separately)**

23.462.0029	Grinding set complete, chrome steel
23.462.0030	Grinding set complete, Standardstahl

ACCESSORIES / SPARE PARTS

23.025.0108	Spacer ring for chrome steel and standard steel grinding set
03.462.0369	Grinding jar, chrome steel
03.470.0035	Disc, chrome steel
03.604.0255	Maalring, chrome steel
03.107.0583	Deksel, chrome steel
03.462.0370	Grinding jar, standard steel
03.470.0036	Disc, standard steel
03.604.0256	Maalring, standard steel
03.107.0582	Deksel, standard steel
03.111.0362	Gasket for lid

100 ML GRINDING SETS

**Complete set, incl. grinding jar, lid with gasket and disc
(please order spacer ring separately)**

23.462.0008	Grinding set complete, chrome steel
23.462.0017	Grinding set complete, standard steel
23.462.0006	Grinding set complete, tungsten carbide, light
23.462.0007	Grinding set complete, tungsten carbide, with protective steel jacket

ACCESSORIES / SPARE PARTS

23.025.0104	Spacer ring for chrome steel and standard steel grinding set
23.025.0105	Spacer ring for tungsten carbide grinding set
23.025.0106	Spacer ring for tungsten carbide light grinding set
23.025.0117	Adapter plate for 4 x 100 ml chrome steel, standard steel and tungsten carbide light grinding sets
05.114.0070	O-ring for lid



50 ML GRINDING SETS

Complete set, incl. grinding jar, lid with gasket and disc

23.462.0055	Grinding set complete, chrome steel for adapter plate
-------------	---

ACCESSORIES / SPARE PARTS

23.025.0118	Adapter plate for 4 x 50 ml chrome steel grinding sets
05.114.0122	O-ring for lid

