



KAAKBREKER BB 400

Ergonomic handling and large feed size

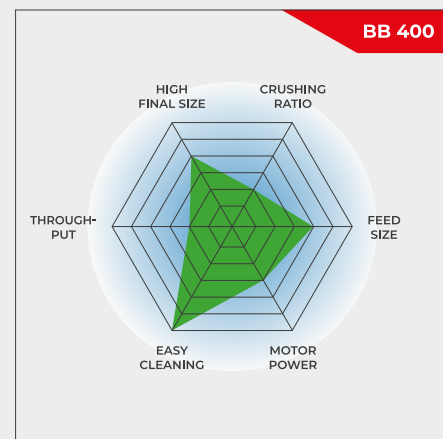
The Jaw Crusher BB 400 is specifically designed for accepting large feed sizes up to 220 x 90 mm. The gap width can be set stepless from 0-30 mm. Depending on the sample material, particle sizes down to 2 mm can be obtained, resulting in a crushing ratio of 50. A throughput of up to 400 kg/h is possible with the BB 400.

The RETSCH jaw crusher series is available in 8 different sizes. Throughput and final fineness depend on the crusher type, selected gap width and breaking properties of the sample material.

Robust design, simple handling and cleaning are the features of the RETSCH jaw crusher models. Small amounts of sample are processed batchwise; for larger amounts the crushers can be operated continuously.

ROBUST & VERSATILE

- | Front door facilitates cleaning of crushing chamber
- | Infinite/continuous gap width setting
- | Wide range of materials for contamination free grinding
- | Collecting receptacle with outlet for continuous operation
- | Connector for dust extraction
- | Scale indicates jaw wear
- | Selection of hoppers for specific applications



Ergonomic handling and large feed size

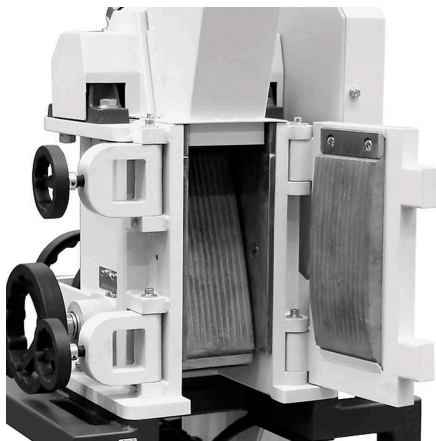
KAAKBREKER BB 400

SUPERIORITY IN DETAIL

For sample amounts up to 10 l, the BB 400 is used batchwise; for larger volumes it can be operated continuously. Thanks to the modular concept of the housing and frame, this jaw crusher is suitable for a wide range of applications.

A front door gives direct access to the crushing chamber at a perfect height for ergonomic and easy cleaning. The feed hopper with splash-back protection can be removed quickly and easily. The BB 400 has a connection for dust extraction and is protected against mechanical overload. A scale indicates the wear of the breaking jaws, informing the user when it is time for an exchange.

The crushing chamber is available in 5 different materials to ensure neutral-to-analysis sample preparation. The technical and safety features make this jaw crusher ideally suited for sample preparation in laboratories and for small scale production.



Front door allows for easy cleaning



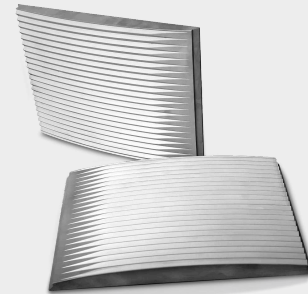
Connection for dust extraction

ACCESSORIES FOR THE JAW CRUSHER BB 400

BREAKING JAWS

Breaking jaws and wearing plates are available in five different materials to be selected depending on the sample and the analysis to be carried out:

- | mangaanstaal
- | roestvrij staal
- | wolframcarbide
- | staal voor het malen zonder zware metalen
- | NiHard4 staal



TRECHTER TYPES

Three hopper types are available for the BB 400 jaw crusher.

The standard hopper can be optionally equipped with a special infeed hopper. This additional hopper can be placed on a table for loading up to 10 l of sample material. By attaching it to the standard hopper with a connection rod, the sample is fed into the BB 400 with the help of a manual pusher.

A special hopper is available for quick and easy feeding of drill cores or large amounts of bulk material. The cover can be closed to serve as splash back protection.

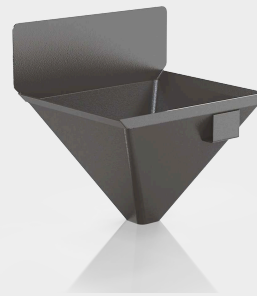


COLLECTING VESSELS

In addition to the standard receptacle which accepts sample amounts up to 10 l, two options are available.

For continuous operation the collection funnel with outlet is the ideal choice.

The large volume receptacle accepts up to 26 liter of sample and comes with a flexible connection flange and a carrier on wheels. This version is the best choice for dust-free operation.



KAAKBREKER BB 400

TYPISCHE MONSTER MATERIALEN

RETSCH's powerful jaw crushers are ideally suited for preliminary crushing of construction materials, ores, granite, oxide ceramics, quartz, slag, silicon, coal, tungsten alloys, cement clinker, etc.



cement klinkers



keramiek



Katalysatoren



boorkern

Bezoek onze toepassingsdatabase om de beste oplossing voor uw monstervoorbereiding of analyse te vinden.

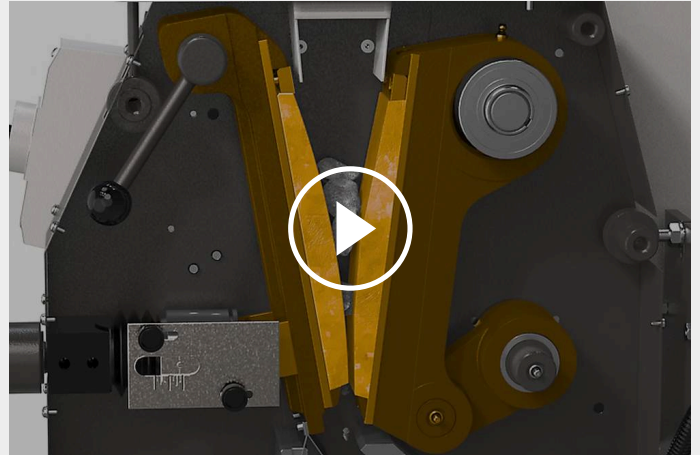
KAAKBREKER BB 400

PRINCIPE

De kaakbreker BB 400 is een robuust en krachtige breker. Het toevoermateriaal gaat door de trechter en komt de breekkamer binnen.

Vermaling vindt plaats in het V-vormige gebied tussen de vaste breekkaak en de beweegbare breekkaak die aangedreven wordt door een excentrische aandrijfas. De elliptische beweging verplettert het monster dat onder zwaartekracht in de richting van de breespleet wordt bewogen.

Van zodra het product kleiner is dan de ingestelde spleetbreedte, vallen de deeltjes in een uitneembare opvangbak. De continue spleetbreedte-instelling met schaal zorgt voor een optimale verkleining in overeenstemming met de ingestelde spleetbreedte.



[Klik om video te bekijken](#)

KAAKBREKER BB 400

PRINCIPE

Toepassingen	Grove en voorvermaling
Toepassingsdomein	Milieu / Recycling, bouwmaterialen, chemie / kunststoffen, engineering / electronica, geologie / metallurgie, glas / keramiek
Toevoermateriaal	medium-hard, hard, breekbaar, taai
Maalprincipe	Druk
Korrelgrootte materiaal*	< 220 x 90 mm
Eindfijnheid*	< 2 mm
Doorvoer*	400 kg/h
Materiaal van maalwerktuigen	mangaanstaal, wolframcarbide, staal voor het malen zonder zware metalen, NiHard4
Kaakbreedte	220 x 90 mm
Instelling spleetopening	0 - 30 mm
Weergave spleetopening	schaal
Nulpuntsinstelling	Ja
Weergave slijtage graad	yes, up to minus 10 mm
Afneembare trechter	Ja
Stofextractie-eenheid	Ja
Centrale smeerinstallatie	nee
Proces-lijn versie	optioneel
Opvangcapaciteit	10 l
Onderstel	vario onderstel (aanpasbaar voor continu vermalen)
Aandrijving	3-fasenmotor
Aandrijfvermogen	5.5 kW
Gegevens electriciteit	verschillende spanningen
Aansluiting electriciteit	3-fasen
Beschermingsklasse	IP 55
B x H x D gesloten	695 x 1399 x 719 mm
Netto gewicht	~ 400 kg
Standaarden	CE

*afhankelijk van toegevoerd materiaal en configuratie/instellingen van toestel

www.retsch.nl/bb400

BESTELGEGEVENS

JAW CRUSHER BB 400

Jaw Crusher BB 400 complete with breaking jaws, wearing plates, door, feed hopper, 10 l collecting receptacle and base frame

				kaken / slijtplaten
21.002.0001		BB 400	3~ 400 V, 50 Hz	manganese steel / hardened steel
21.002.0012		BB 400	3~ 400 V, 50 Hz	NiHard 4 / hardened steel
21.002.0002		BB 400	3~ 400 V, 50 Hz	tungsten carbide / hardened steel
21.002.0004		BB 400	3~ 400 V, 50 Hz	heavy metal free steel / heavy metal free steel

andere spanningsvarianten aan dezelfde prijs op aanvraag

CYCLONE FOR BB 400

CYCLONE SET WITH HOLDER, CONNECTING ELEMENT, LID WITH CONNECTOR FOR VACUUM CLEANER AND SAMPLE OUTLET
(PLEASE ORDER CASSETTE WITH OUTLET SEPERATELY)

22.935.0039	Cyclone set with collecting receptacle 30 l
03.183.0142	Cassette with outlet for use with cyclone
02.605.0420	Adjustable steel connection tubing (316L) for cyclone set
05.707.0208	FDA certified hose, 1.5 m
22.748.0017	Industrial vacuum cleaner Attix, 230 V, 50/60 Hz

ACCESSORIES JAW CRUSHER BB 400

BREAKING JAWS BB 400

23.048.0029	Kaken, mangaanstaal, 1 paar
23.048.0045	Kaken, NiHard 4, 1 paar
23.048.0030	Kaken, tungsten carbide, 1 paar
23.048.0031	Kaken, heavy metal free steel, 1 paar

other materials available on request

WEARING PLATES BB 400

23.711.0021	Slijtplaten, gehard staal, 1 paar
23.711.0020	Slijtplaten, tungsten carbide, 1 paar
23.711.0019	Slijtplaten, heavy metal free steel, 1 paar

other materials available on request

FURTHER ACCESSORIES BB 400

23.003.0016	Opvangbak, standard steel, powder coated, 5 litres
02.054.0058	Opvangbak, standard steel, powder coated, 10 litres
23.003.0024	Opvangbak, roestvrij staal, 26 litres complete with connection flange and carrier with wheels
02.785.0226	Collecting funnel with outlet for continuous use, powder coated
23.785.0018	Hopper for drill cores
23.003.0019	Infeed hopper, roestvrij staal, 10 litres incl. connection rod and manual pusher
03.025.0137	Adapter for vacuum cleaner
01.657.0031	Verhoogde toegangstrap