



Rugged design meets high final fineness

Hammer mills are used for crushing, pulverizing and deagglomeration of medium-hard, hard, brittle, tough and fibrous samples.

The rugged RETSCH Hammer Mill HM 200 accepts large feed sizes up to 100 mm which can be reduced to less than 0.8 mm, depending on the sample

properties.

The mill is ideally suited for processing large volumes batchwise or continuously which ensures high sample throughput. Thanks to features like rugged design, easy handling and quick cleaning, the HM 200 is equally suitable for use in laboratories or pilot plants.

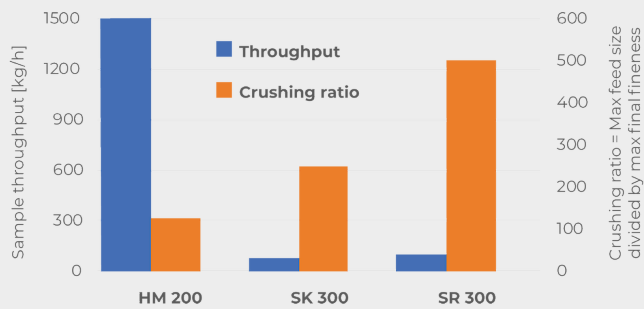


[Videoyu izlemek için tıklayın](#)

HAMMER MILL HM 200

HIGH THROUGHPUT & DEFINED FINAL FINENESS

This diagram shows a comparison of the Hammer Mill HM 200 with two rotor mills. The extremely high sample throughput of the HM 200 is clearly visible. The HM 200 shows a good crushing efficiency of 125, which is the value of the maximum feed size divided by the finest achievable grind size. The SR 300 and SK 300 accept a maximum feed size of 25 mm (unlike the HM 200 which accepts sizes up to 100 mm) and crush particles to a size below 0.05 mm or 0.1 mm respectively - resulting in a higher crushing ratio.



- | Excellent crushing performance
- | Very high throughput of up to 1500 kg/h
- | Fixed speed of 3000 min⁻¹
- | Sieve range from 2 - 40 mm
- | Feed size up to 100 mm, grind size < 0.8 mm
- | Easy access to crushing chamber facilitates cleaning
- | For batchwise or continuous grinding
- | Connector for dust extraction

HAMMER MILL HM 200

USER CONVENIENCE COMBINED WITH MAXIMUM SAFETY

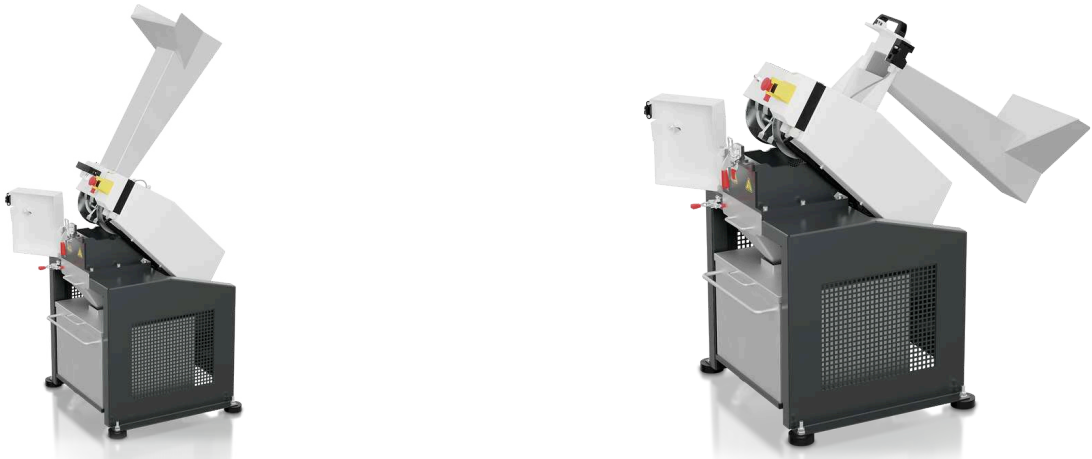
Easy cleaning of the rotor and the hammers thanks to

- | Fold-back hopper to gain access to the crushing chamber from above
- | Additional fold back option in the middle part of the machine allows easy cleaning of rotor and hammers from below

To ensure a long service life of the machine, even when mostly used for tough crushing tasks, the following parts can be exchanged by the user:

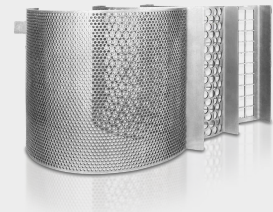
- | Wear plates inside the mill
- | Rotor with the swing hammers

A safety switch and the brake motor ensure that the unit comes to an immediate stop, e.g. if the door is opened unintentionally.



DEFINED PARTICLE SIZE THANKS TO DIFFERENT SIEVES

The achievable final fineness of the sample depends on the material's properties. Hard and brittle materials can be easily crushed in the HM 200 down to particle sizes below 0.8 mm. The range of sieves with aperture sizes from 2 mm to 40 mm allows for perfect adaption to application requirements.



Tough, fibrous, or moist samples like plastic toys, wood or humid coal can be successfully crushed in the hammer mill when choosing a sieve with medium to large aperture size.

CYCLONE SYSTEM

BYE-BYE DUST AND SAMPLE LOSS

Whether you're preparing samples in mining, precious metals, materials research, or environmental analysis, the RETSCH Cyclone System ensures efficiency, precision and safety like never before!

Why should you choose the RETSCH Cyclone System?

| Total Sample Recovery

Eliminate sample loss during crushing with our cyclone, ensuring accurate and reproducible results for every analysis!

| Enhanced Operator Safety

Our cyclone significantly reduces dust exposure, creating a safer and cleaner working environment for your team!

Plus: Existing instruments can be retrofitted with the cyclone system



HAMMER MILL HM 200

HOPPERS AND COLLECTING SYSTEMS

The HM 200 is suitable for batchwise as well as continuous grinding and can be equipped with different hoppers and collecting systems.

- | Standard hopper for quick and easy feeding of large sample amounts
- | The Long stock hopper is beneficial for feeding elongated particles
- | Standard collector for size reduction of sample amounts up to 10 l
- | For large volumes a collector is available which accommodates up to 30 l
- | Continuous operation: Use the continuous gravity outlet and a customer specific collecting system



**Long stock
hopper**



**Collecting
receptacle
10 l**



**Collecting
receptacle
30 l**



**Gravity outlet for
continuous
operation**

HAMMER MILL HM 200

TIPIK ÖRNEK MALZEMELER

RETSCH's powerful hammer mill is ideally suited for preliminary crushing and fine grinding of ores, granite, ceramics, quartz, slag, soil, coal, glass, cement clinker, wood, plastics, feed pellets, dry animal feed, dried herbs etc.



Cam



coal



Hayvan yemi



Otlar

Örnek hazırlama göreviniz için en iyi çözümü bulmak için uygulama veri tabanımızı ziyaret ediniz

HAMMER MILL HM 200

FONKSIYON PRENSIBI

A hopper leads the sample material into the grinding chamber of the hammer mill. The HM 200 is equipped with a horizontal rotating shaft on which 10 freely swinging hammers are mounted. Those hammers crush the material at high speed inside the grinding chamber. With the swing hammers in contrast to fixed hammers, the risk of blocking the machine as well as the wear is minimized. The material is crushed by impact when hit by each hammer and while bouncing inside the grinding chamber. As soon as the sample is fine enough to pass through the sieve, it falls through the gravity outlet into a collecting vessel.



[Videoyu izlemek için tıklayın](#)

HAMMER MILL HM 200

TEKNİK VERİ

Uygulamalar	coarse and pre-crushing, desagglomeration
Uygulama alanı	Kimya / plastik, Tarım, coal, food / feed, Cam / seramik, Jeoloji / metalurji, Mühendislik / elektronik, Çevre / geri dönüşüm, İnşaat malzemeleri
Besleme malzemesi	Orta sert, Sert, Kırılgan, Sert, Lifli
Boyut küçültme prensibi	etki, kesme
Malzeme giriş büyüklüğü	< 100 mm
Çıkış büyüklüğü	< 0.8 mm
Parti boyutu / besleme miktarı	up to 30 l depending on collecting receptacle
Hız, 50 Hz (60 Hz) de	3000 min-1 (3500 min-1)
Çıktı*	1500 kg/h
Rotor hızı	31.4 m/s
Rotor çapı	200 mm
Rotor tipi	10 swing hammer
Kuru öğütme	evet
Islak eleme	Hayır
Kroyojenik öğütme	Hayır
Öğütücü elemanların malzemesi	hardened steel 1.0503 (hammers); steel 1.0330 (sieves)
Elek boyutu	2 / 3 / 4 / 5 / 6 / 8 / 10 / 15 / 40 mm
Toz çekme ünitesi	evet
Üretim hattı versiyonu	evet
Kollektör kapasitesi	10 l, 30 l, continuous outlet
Tahrik	3-faz motor
Motor gücü	1.5 kW
Elektriksel veriler	farklı voltajlar
Güç bağlantısı	3-faz
Koruma kodu	IP 54
G x Y x D kapalı	700 x 1570 x 750 mm
Net ağırlık	~ 150 kg
Standartlar	CE

* besleme malzemesi ve cihaz yapılandırmasına / ayarlarına bağlıdır

www.retsched.com.tr/hm200

SIPARIŞ BİLGİSİ

HAMMER MILL HM 200

**Hammer Mill incl. rotor with swing hammers, wearing plates and 10 l collecting receptacle
(please order hopper and bottom sieve separately)**

21.753.0001	HM 200	3~ 400 V, 50 Hz
21.753.0002	HM 200	3~ 200-220 V, 60 Hz

aynı fiyata diğ er elektrikli versiyonlar mevcuttur

HAZNE

23.785.0031	Long-stock hopper
23.785.0032	Standard hopper

BOTTOM SIEVES HM 200, STEEL

03.647.0563	Trapez delikler	0.50 mm
03.647.0564	Trapez delikler	1.00 mm
03.647.0592	Trapez delikler	1.50 mm
03.647.0565	Yuvarlak delikler	2.00 mm
03.647.0566	Yuvarlak delikler	3.00 mm
03.647.0567	Yuvarlak delikler	4.00 mm
03.647.0568	Yuvarlak delikler	5,00 mm
03.647.0569	Yuvarlak delikler	6.00 mm
03.647.0570	Yuvarlak delikler	8.00 mm
03.647.0571	Yuvarlak delikler	10.00 mm
03.647.0572	Kare delikler	15.00 mm
03.647.0573	Kare delikler	40.00 mm

CYCLONE FOR HM 200

**CYCLONE SET WITH HOLDER, CONNECTING ELEMENT, LID WITH CONNECTOR FOR VACCUUM CLEANER
AND SAMPLE OUTLET
(PLEASE ORDER CASSETTE WITH OUTLET SEPERATELY)**

22.935.0039	Cyclone set with collecting receptacle 30 l
03.183.0138	Cassette with outlet for use with cyclone
02.605.0420	Adjustable steel connection tubing (316L) for cyclone set
05.707.0208	FDA certified hose, 1.5 m
22.748.0017	Industrial vacuum cleaner Attix, 230 V, 50/60 Hz

ADDITIONAL ITEMS HM 200

23.003.0039	Collecting receptacle, 10 litres, stainless steel
23.003.0038	Collecting receptacle, 30 litres, stainless steel
23.003.0037	Outlet for continuous operation
22.786.0036	Conversion kit for continuous operation, incl. standard hopper, outlet for continuous operation, collecting receptacle, 30 liters, stainless steel
22.748.0017	Industrial vacuum cleaner, 230 V, 50/60 Hz, incl. adapter (other electrical versions and spare filter bags available upon request)
23.711.0035	Wear plates, hardened steel
22.002.0028	Rotor incl. swing hammers